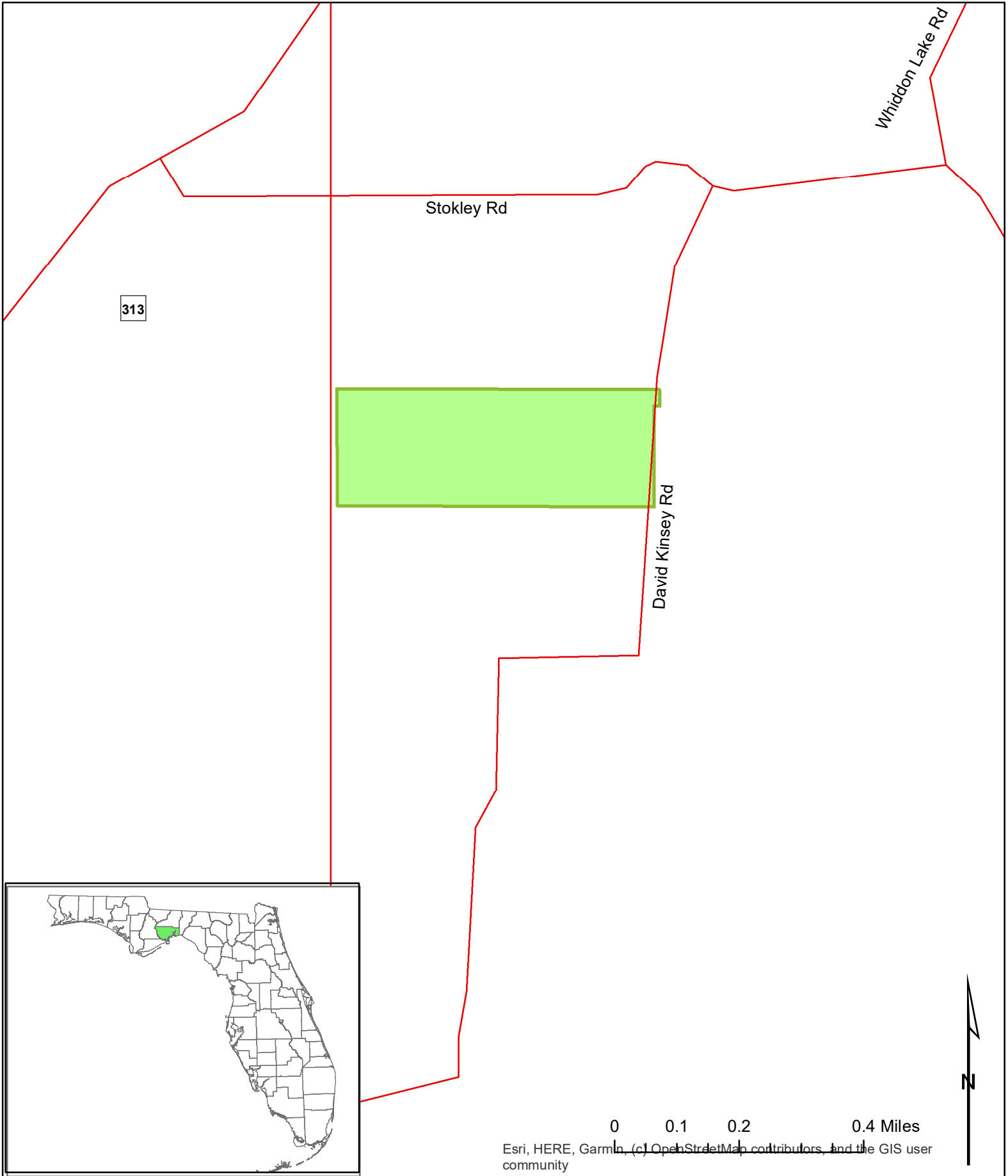


Thomas Tract, Wakulla County, FL



D.E. Billingsley
[Licensed Real Estate Broker](#)
Alabama/Florida/Georgia/Montana

Phone: (850) 510-3309
Email: DE@debillingsley.com
www.debillingsley.com

Esri, HERE, Garmin, (c) OpenStreetMap contributors, and the GIS user community