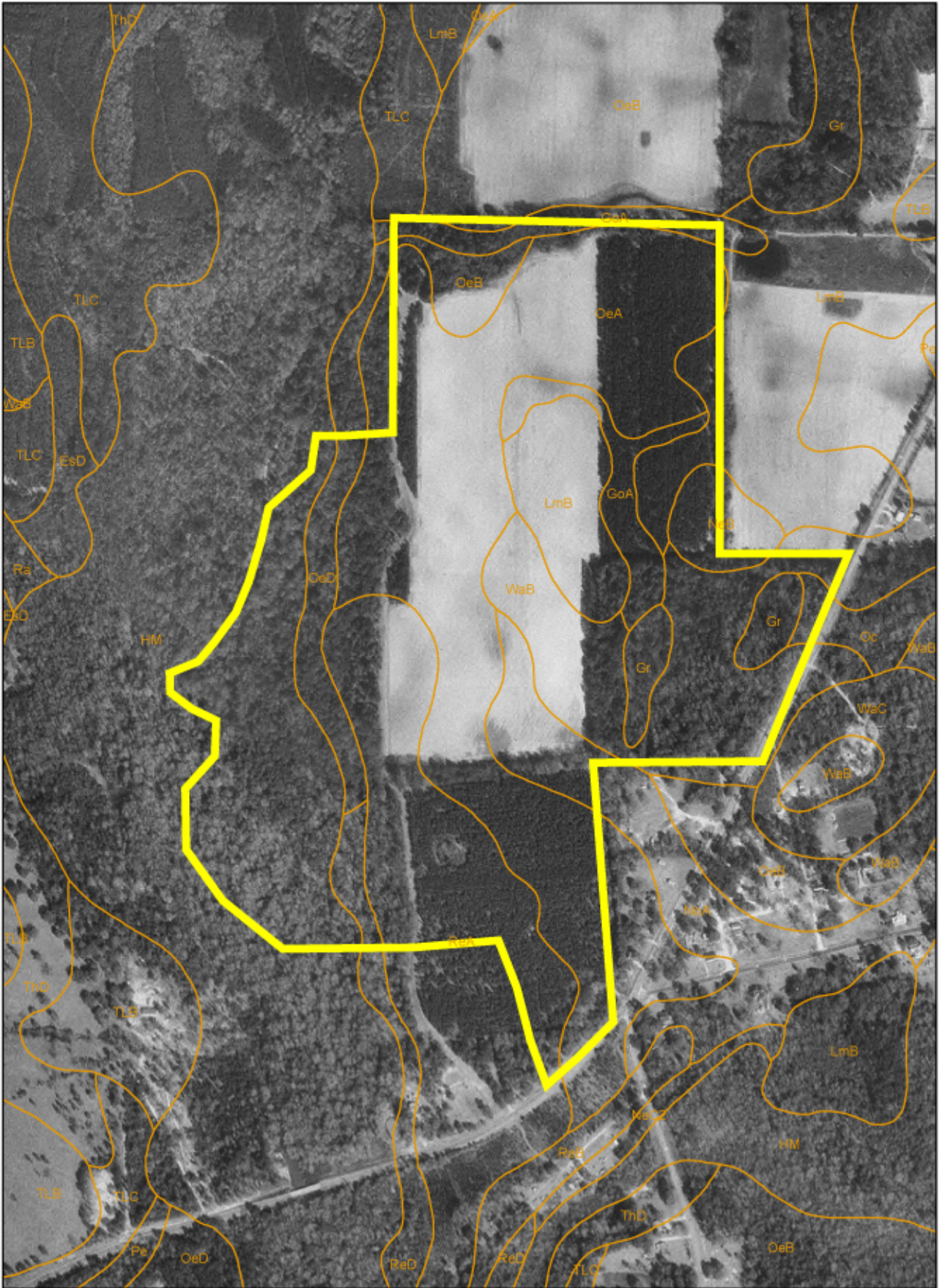


Sowhatchee Creek - Early County, GA



Early County

Soil Type

AmB	Americus loamy sand, 0-5% slopes
AmC	Americus loamy sand, 5-8% slopes
AmD	Americus loamy sand, 8-12% slopes
BmA	Buncombe loamy sand, 0-2% slopes
CaB2	Carnegie sandy loam, 3-5% slopes, eroded
CaC2	Carnegie sandy loam, 5-8% slopes, eroded
CaD2	Carnegie sandy loam, 8-12% slopes, eroded
CnA	Clarendon loamy sand, 0-2% slopes
DuA	Duplin sandy loam, 0-2% slopes
EsD	Esto sandy loam, 8-15% slopes
FeA	Faceville sandy loam, 0-2% slopes
FeB	Faceville sandy loam, 2-5% slopes
FeC2	Faceville sandy loam, 5-8% slopes, eroded
FeD	Faceville sandy loam, 8-12% slopes
GoA	Goldsboro loamy sand, 0-2% slopes
Gr	Grady loam
GsA	Greenville sandy loam, 0-2% slopes
GsB	Greenville sandy loam, 2-5% slopes
GsC	Greenville sandy loam, 5-8% slopes
GsD	Greenville sandy loam, 8-12% slopes
GvC2	Greenville sandy clay loam, 5-8% slopes, eroded
HM	Herod_Muckalee association
HvA	Hornsville fine sandy loam, 0-2% slopes
KoA	Kolomoki fine sandy loam, 0-2% slopes
LmB	Lucy loamy sand, 0-5% slopes
LmC	Lucy loamy sand, 5-8% slopes
MM	Meggett-Muckalee association
MaA	Marlboro sandy loam, 0-2% slopes
MaB	Marlboro sandy loam, 2-5% slopes
Me	Meggett loam
NeB	Nankin-Esto sandy loams, 2-5% slopes
NeC2	Nankin-Esto sandy loams, 5-8% slopes, eroded
NoA	Norfolk loamy sand, 0-2% slopes
NoB	Norfolk loamy sand, 2-5% slopes
NoC	Norfolk loamy sand, 5-8% slopes
OTE	Orangeburg, Esto, and Troup soils, 12-25% slopes
Oc	Ocilla loamy sand
OeA	Orangeburg loamy sand, 0-2% slopes
OeB	Orangeburg loamy sand, 2-5% slopes
OeC	Orangeburg loamy sand, 5-8% slopes
OeD	Orangeburg loamy sand, 8-12% slopes

Pe	Pelham loamy sand
Ra	Rains loamy sand
ReA	Red Bay sandy loam, 0-2% slopes
ReB	Red Bay sandy loam, 2-5% slopes
ReC	Red Bay sandy loam, 5-8% slopes
ReD	Red Bay sandy loam, 8-12% slopes
Ro	Riverview loam
TLB	Troup-Lakeland association, 1-5% slopes
TLC	Troup-Lakeland association, 5-8% slopes
TfA	Tifton loamy sand, 0-2% slopes
TfB	Tifton loamy sand, 2-5% slopes
TgC2	Tifton loamy sand, 5-8% slopes, eroded
ThD	Troup sand, 8-12% slopes
UdD	Udorthents, 2-20% slopes
UkB	Urban land-Kolomoki complex, 0-5% slopes
Up	Udorthents-Pits complex
WaB	Wagram loamy sand, 0-5% slopes
WaC	Wagram loamy sand, 5-7% slopes
W	Water