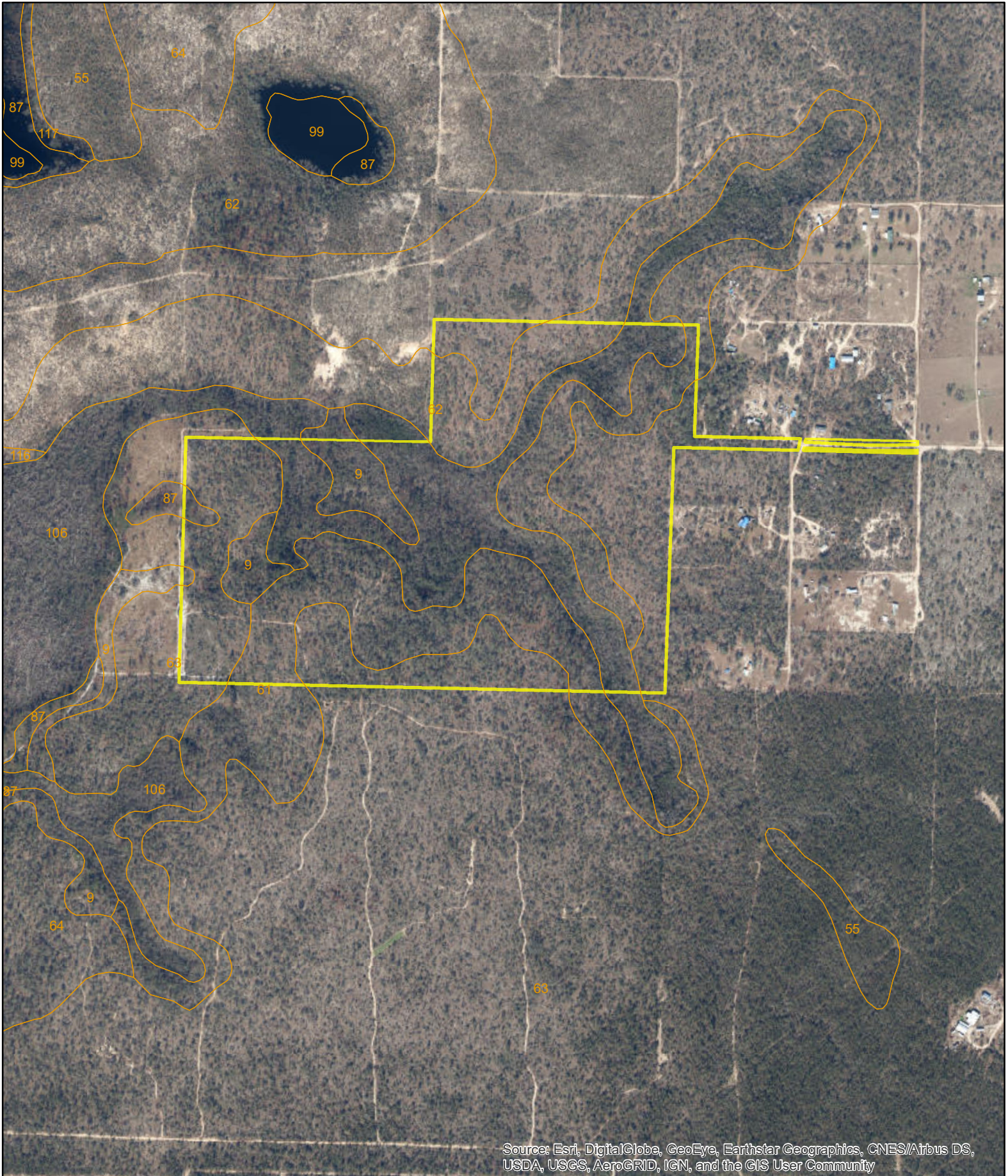


Pouncey Tract, Washington County, FL



Source: Esri, DigitalGlobe, GeoEye, Earthstar Geographics, CNES/Airbus DS, USDA, USGS, AeroGRID, IGN, and the GIS User Community

D.E. Billingsley
Licensed Real Estate Broker
Alabama/Florida/Georgia/Montana

Phone: (850) 510-3309
Email: DE@debillingsley.com
www.debillingsley.com

Washington County

Soil Type

2	Rutlege, Pickney & Pamlico soils, frequently flooded	100	Leon-Chipley complex
4	Gritney loamy sand, 205% slopes	106	Pantego & Clara soils, ponded
7	Bladen-Dunbar complex, occasionally flooded	110	Arents, 0-8% slopes
9	Albany, Chipley, Leon complex, 0-5% slopes	112	Pottsburg sand, occasionally flooded
11	Dothan loamy sand, 0-2% slopes	113	Pits-Udorthents complex, reclaimed, 0-90% slopes
12	Dothan loamy sand, 2-5% slopes	116	Blanton-Lakeland complex, 0-5% slopes
14	Dothan loamy sand, 5-8% slopes	117	Blanton-Lakeland complex, 5-8% slopes
18	Fuquay-Dothan complex, 5-8% slopes	119	Blanton-Lakeland complex, 8-12% slopes
22	Nankin-Cowarts complex, 2-5% slopes, eroded	121	Goldsboro loamy sand, 0-2% slopes
23	Nankin-Cowarts complex, 5-8% slopes, eroded	122	Goldsboro loamy sand, 2-5% slopes
29	Dunbar loamy sand, 2-5% slopes, occasionally flooded	123	Blanton-Lakeland complex, 12-45% slopes
35	Lucy-Troup complex, 0-5% slopes	127	Goldsboro loamy sand, 5-8% slopes
36	Troup-Lucy complex, 5-8% slopes	128	Blanton-Bonneau complex, 0-5% slopes
39	Bonifay-Fuquay complex, 0-5% slopes	129	Blanton-Bonneau complex, 5-8% slopes
40	Bonifay loamy sand, 5-8% slopes	99	Water
41	Lucy sand, 0-5% slopes		
52	Grady loam, ponded		
54	Albany-Ocilla complex, 0-5% slopes, occasionally flooded		
55	Chipley-Albany-Hurricane complex, 0-5% slopes		
56	Albany-Ocilla complex, 5-8% slopes		
57	Ocilla-Leefield complex, 0-5% slopes		
61	Lakeland sand, 8-12% slopes		
62	Lakeland sand, 12-45% slopes		
63	Lakeland sand, 0-5% slopes		
64	Lakeland sand, 5-8% slopes		
67	Nankin-Cowarts-Lakeland complex, 5-12% slopes		
68	Nankin-Cowart-Lakeland complex, 12-45% slopes		
71	Lynchburg loamy fine sand, 0-2% slopes		
72	Lynchburg loamy fine sand, 2-5% slopes		
85	Searcy-Oktibbeha complex, 2-5% slopes		
86	Hannon-Oktibbeha complex, 5-8% slopes		
87	Clara & Plummer soils, occasionally ponded		
90	Rains & Bayboro soils, depressional		
91	Orangeburg loamy sand, 2-5% slopes		
96	Orangeburg loamy sand, 5-8% slopes		
98	Rutlege loamy fine sand, depressional		