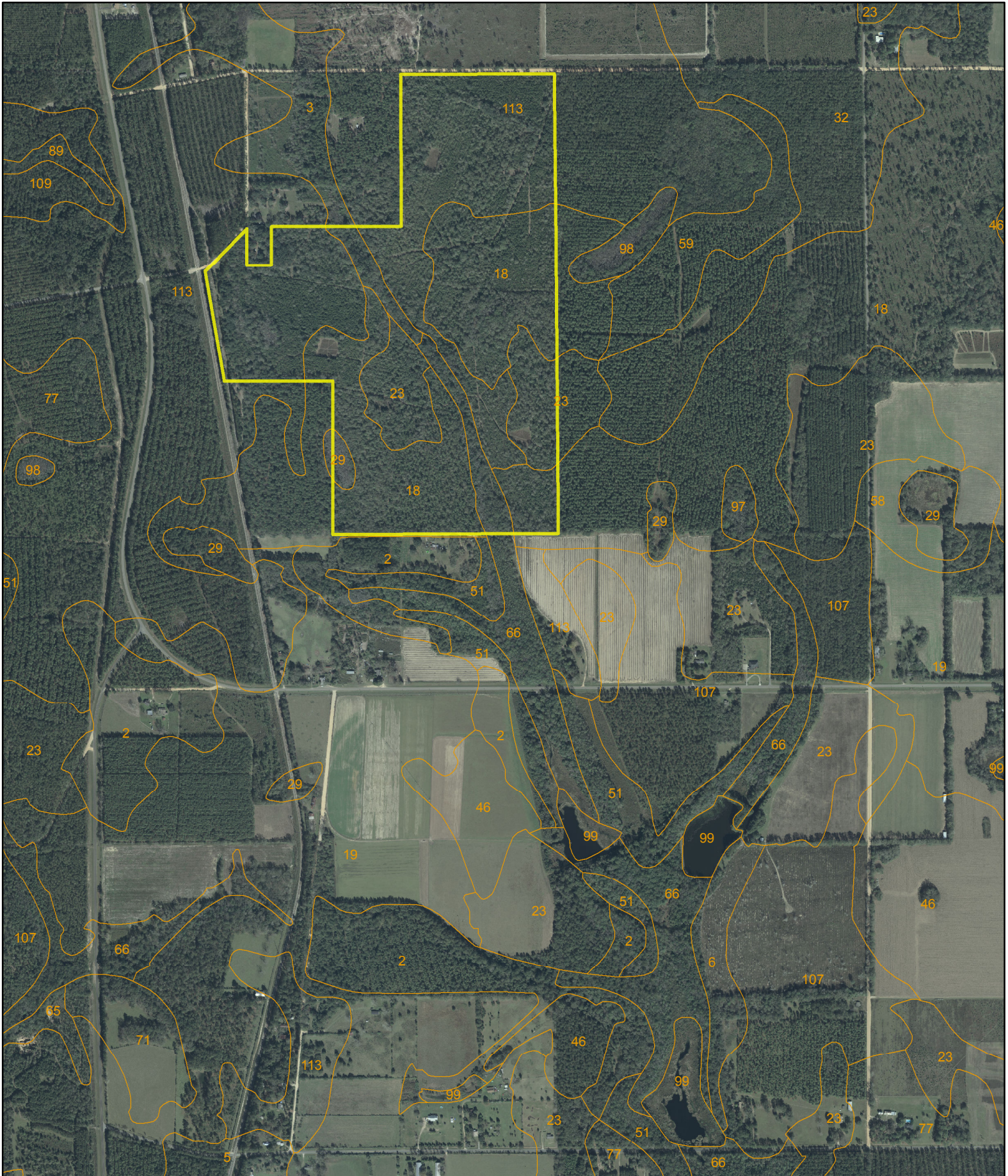


# Mt. Pleasant Tract - Gadsden County, FL



D.E. Billingsley  
Licensed Real Estate Broker  
Alabama/Florida/Georgia/Montana

Phone: (850) 510-3309  
Email: [DE@debillingsley.com](mailto:DE@debillingsley.com)  
[www.debillingsley.com](http://www.debillingsley.com)



# Gadsden County

## Soil Type

2	Albany-Blanton complex, 0-5% slopes	60	Troup sand, 8-15% slopes
3	Albany-Ousley-Pelham complex, 0-5% slopes, occasionally flooded	61	Troup-Nankin complex, 5-8% slopes
5	Blanton sand, 0-5% slopes	63	Troup-Nankin complex, 15-45% slopes
6	Blanton sand, 5-8% slopes	65	Udorthents, reclaimed
9	Bonifay-Alpin complex, 0-5% slopes	66	Pickney, Dorovan, and Bibb soils, frequently flooded
10	Bonifay-Albany-Centenary complex, 0-5% slopes	69	Lucy-Bonifay-Orangeburg complex, 5-8% slopes
11	Troup-Bonifay-Fuquay complex, 8-15% slopes	71	Cowarts-Nankin complex, 205% slopes
12	Bonneau-Leefield-Norfolk complex, 0-5% slopes	72	Goldsboro-Ocilla complex, 5-8% slopes
14	Cowarts-Dothan-Fuquay complex, 5-8% slopes	73	Norfolk loamy fine sand, 5-8% slopes
16	Cowarts-Nankin complex, 8-15% slopes	77	Bonifay-Fuquay complex, 0-5% slopes
18	Dothan-Fuquay complex, 0-2% slopes	78	Chipley, Leon, and Foxworth soils, 0-5% slopes
19	Dothan-Fuquay complex, 2-5% slopes	79	Hurricane and Chipley soils, 0-3% slopes
21	Dothan-Fuquay-Cowarts complex, 8-15% slopes	80	Foxworth-Lakeland complex, 0-5% slopes
23	Fuquay-Lucy-Orangeburg complex, 0-5% slopes	82	Chipley-Foxworth complex, 0-5% slopes
24	Fuquay-Bonifay complex, 5-15% slopes	83	Foxworth-Lakeland complex, 5-15% slopes
27	Goldsboro loamy fine sand, 0-2% slopes	85	Bonifay-Leon-Chipley complex, 0-5% slopes
28	Goldsboro loamy fine sand, 2-5% slopes	86	Leon, Clara, and Pickney soils, commonly flooded
29	Grady fine sandy loam, depressional	87	Ousley, Rutlege, and Pickney soils, commonly flooded
30	Lakeland sand, 0-5% slopes	88	Rutlege, Bibb, and Surrency soils, frequently flooded
31	Lakeland sand, 5-15% slopes	89	Bibb-Rains-Garcon complex, occasionally flooded
32	Leefield-Bonifay-Dothan complex, 0-5% slopes	90	Hosford and Plummer mucky sands, 2-12% slopes
33	Leon-Chipley complex	91	Pits
35	Lucy-Troup complex, 8-15% slopes	92	Telogia sandy loam, 2-5% slopes
36	Lucy-Orangeburg-Cowarts complex, 15-45% slopes	93	Foxworth-Blanton-Chipley complex, 0-5% slopes
40	Cowarts-Dothan-Fuquay complex, 15-60% slopes	94	Albany-Garcon-Bibb complex, 0-5% slopes, occasionally flooded
41	Norfolk loamy fine sand, 0-2% slopes	96	Pelham sand, 0-5% slopes
42	Norfolk loamy fine sand, 2-5% slopes	97	Eunola, Garcon, and Ousley soils, occasionally flooded
43	Ocilla sand, 0-5% slopes	98	Rutlege and Plummer soils, depressional
45	Orangeburg loamy sand, 0-2% slopes	99	Water
46	Orangeburg loamy sand, 2-5% slopes	101	Albany-Ocilla-Chipley complex, 0-5% slopes
47	Orangeburg-Norfolk-Tifton complex, 5-8% slopes	104	Urban land-Orangeburg-Norfolk complex, 2-5% slopes
48	Fuquay-Orangeburg-Norfolk complex, 8-15% slopes	105	Urban land-Orangeburg-Norfolk complex, 5-8% slopes
49	Orangeburg-Norfolk complex, 2-5% slopes		
51	Plummer sand, 0-5% slopes		
52	Rains fine sandy loam		
58	Tifton loamy fine sand, 2-5% slopes		
59	Troup-Lakeland-Lucy complex, 2-8% Slopes		

- 106 Plummer-Leon-Sapelo complex
- 107 Fuquay-Bonifay complex, 0-5% slopes
- 108 Troup-Lakeland complex, 15-45% slopes
- 109 Dothan-Cowarts-Fuquay complex, 15-60% slopes
- 113 Leefield fine sand, 0-5% slopes
- 115 Faceville loamy fine sand, 2-5% slopes
- 116 Faceville loamy fine sand, 5-8% slopes
- 117 Cowarts-Hosford complex, 8-45% slopes
- 118 Cowarts-Nankin complex, 15-45% slopes
- 119 Wahee and Ochlockonee soils, 0-3% slopes, occasionally flooded
- 120 Hardin Heights-Telogia complex, 5-45% slopes