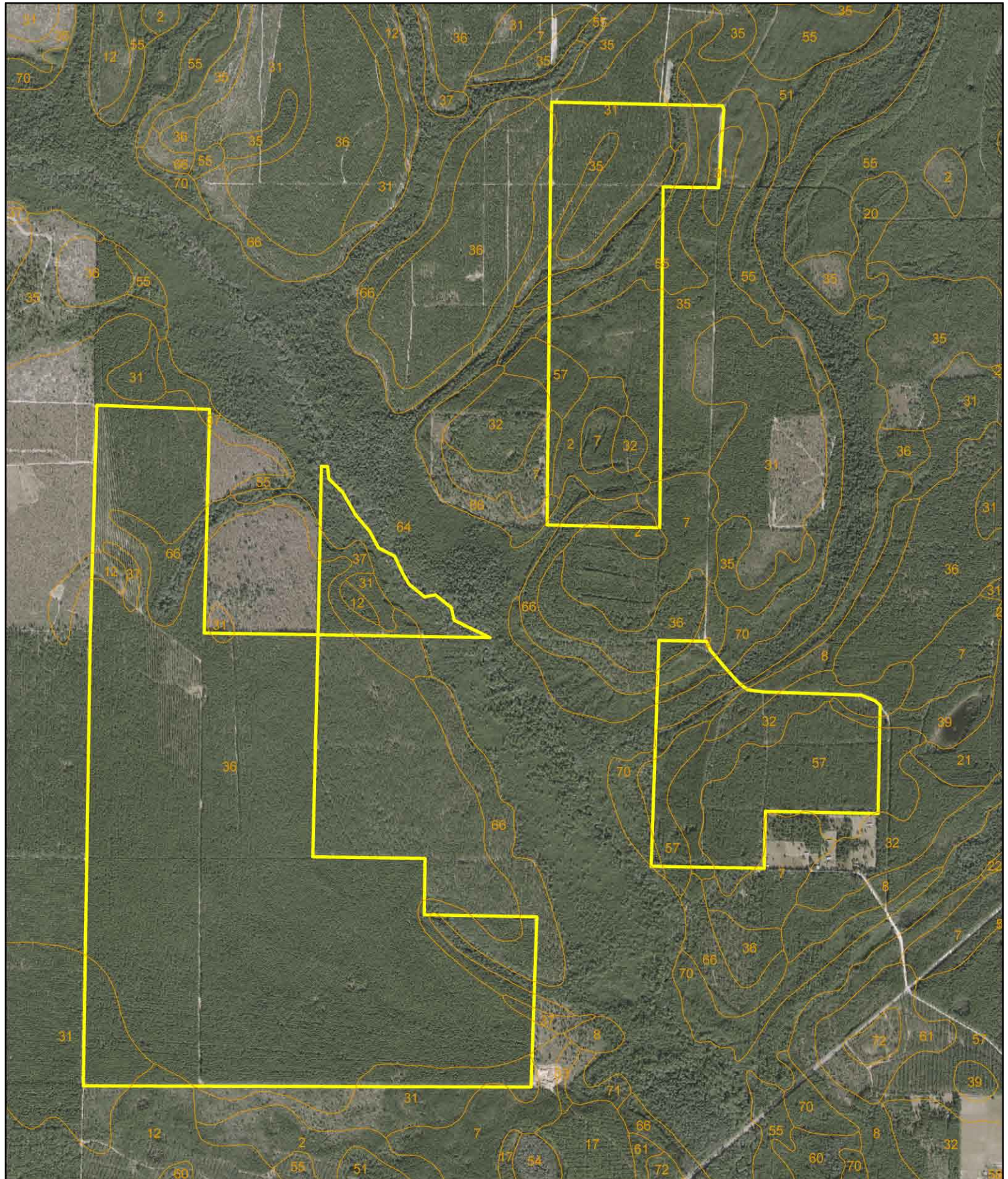


K-Train Timber Tract - Calhoun County, FL



D.E. Billingsley
[Licensed Real Estate Broker](#)
Alabama/Florida/Georgia/Montana

Phone: (850) 510-3309
Email: DE@debillingsley.com
www.debillingsley.com

Calhoun County

Soil Type

2	Albany loamy sand, 0-5% slopes	64	Pamlico, Bibb, and Rutlege soils, frequently flooded
4	Brickyard clay loam, frequently flooded	66	Lakeland and Troup soils, 8-12% slopes
5	Robertsdale fine sandy loam	67	Alapaha loamy sand, 0-2% slopes
6	Bladen loam, rarely flooded	68	Croatan, Kinston, and Surrency soils, frequently flooded
7	Blanton sand, 0-5% slopes	69	Leefield loamy sand, 5-8% slopes
8	Blanton sand, 5-8% slopes	70	Alapaha loamy sand, 2-8% slopes
10	Bonifay sand, 0-5% slopes	71	Dothan-Fuquay complex, 8-12% slopes
12	Chipley sand, 0-5% slopes	72	Pits
14	Chipola loamy sand, 0-5% slopes, very rarely flooded	99	Water
17	Floralia loamy sand, 0-2% slopes		
18	Floralia loamy sand, 2-5% slopes		
20	Dorovan-Pamlico-Rutlege association, depressional		
21	Dothan sandy loam, 0-2% slopes		
22	Dothan loamy sand, 2-5% slopes		
23	Dothan loamy sand, 5-8% slopes		
24	Dunbar fine sandy loam, rarely flooded		
25	Duplin very fine sandy loam, very rarely flooded		
29	Kenansville loamy sand, wet substratum, 0-5% slopes, rarely flooded		
30	Garcon loamy sand, rarely flooded		
31	Foxworth sand, 0-5% slopes		
32	Fuquay loamy sand, 0-2% slopes		
33	Fuquay loamy sand, 2-5% slopes		
34	Fuquay loamy sand, 5-8% slopes		
35	Hurricane sand		
36	Lakeland sand, 0-5% slopes		
37	Lakeland sand, 5-8% slopes		
38	Wahee-Ochlockonee complex, commonly flooded		
39	Leefield loamy sand, 0-5% slopes		
41	Lucy loamy sand, 0-2% slopes		
42	Lucy sand, 2-5% slopes		
43	Lucy sand, 5-8% slopes		
44	Orangeburg loamy sand, 0-2% slopes		
45	Orangeburg loamy sand, 2-5% slopes		
46	Orangeburg sandy loam, 5-8% slopes		
48	Pansey sandy loam		
51	Plummer sand, 0-5% slopes		
54	Croatan, Surrency, and Pantego soils, depressional		
55	Pottsburg sand		
57	Stilson loamy sand, 0-2% slopes		
58	Stilson loamy sand, 2-5% slopes		
60	Croatan, Rutlege, and Surrency soils, depressional		
61	Troup sand, 0-5% slopes		
62	Troup sand, 5-8% slopes		