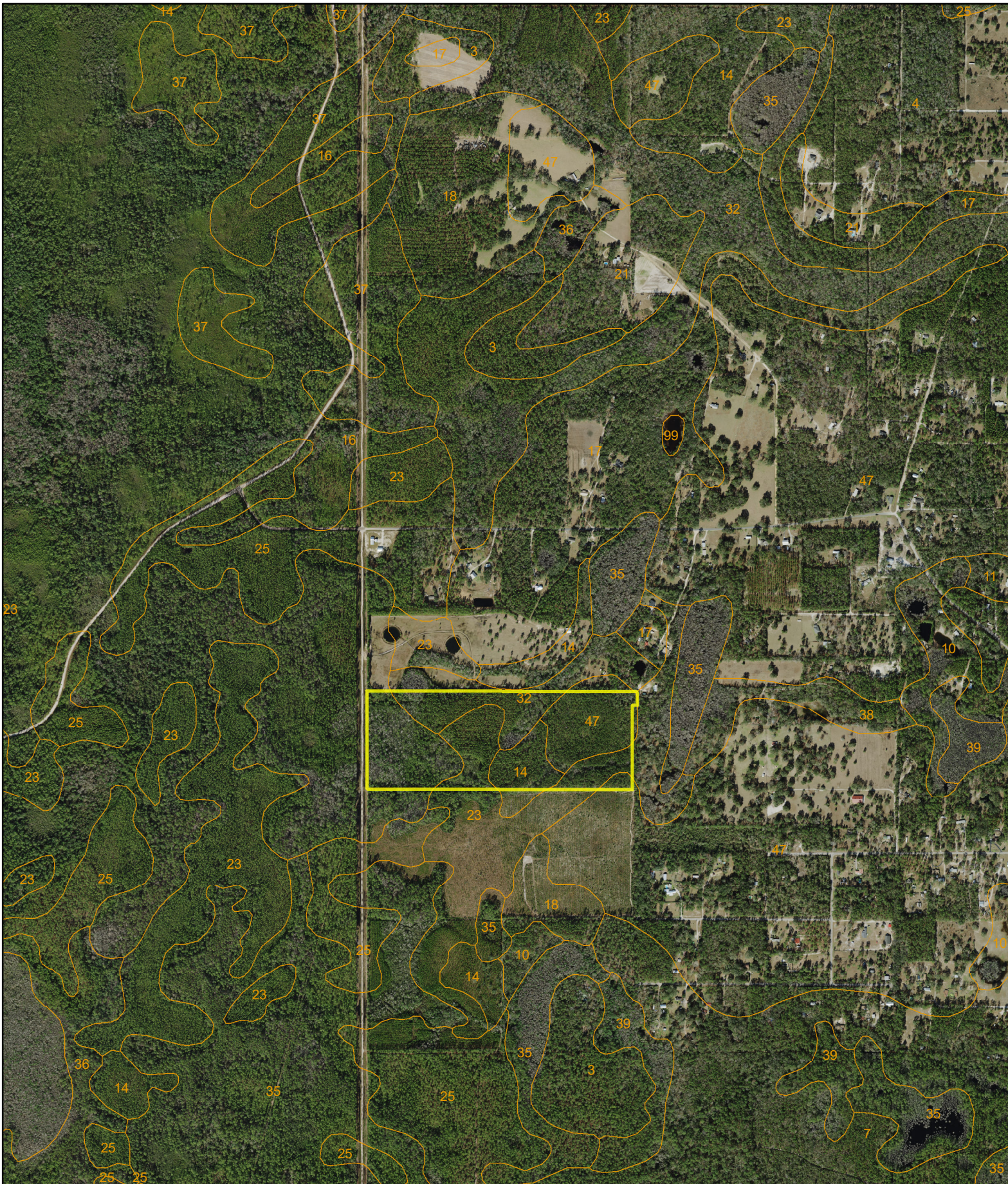


# Thomas Tract, Wakulla County, FL



D.E. Billingsley  
Licensed Real Estate Broker  
Alabama/Florida/Georgia/Montana

Phone: (850) 510-3309  
Email: [DE@debillingsley.com](mailto:DE@debillingsley.com)  
[www.debillingsley.com](http://www.debillingsley.com)



# Wakulla County

## Soil Type

- 3 Lutterloh sand, 0-5% slopes
- 4 Alpin sand, 0-5% slopes
- 6 Bayvi, Isles, and Estero soils, frequently flooded
- 7 Otela fine sand, 0-5% slopes
- 8 Otela sand, 5-8% slopes
- 10 Chaires fine sand
- 11 Shadeville fine sand, 0-5% slopes
- 12 Shadeville-Seaboard fine sands, 0-3% slopes
- 14 Ridgewood fine sand, 0-5% slopes
- 16 Croatan-Dorovan mucks
- 17 Ortega sand, 0-5% slopes
- 18 Hurricane sand, 0-5% slopes
- 19 Kershaw sand, 0-5% slopes
- 21 Lakeland sand, 0-5% slopes
- 23 Leon sand
- 25 Mandarin fine sand
- 26 Tooles-Nutall fine sands
- 27 Moriah-Pilgrims fine sands
- 28 Tooles-Nutall fine sands, frequently flooded
- 29 Tooles-Nutall-Chaires fine sands
- 30 Ocilla sand, 0-5% slopes
- 32 Plummer fine sand
- 33 Pottsburg sand
- 35 Rutlege sand
- 36 Rutlege sand, frequently flooded
- 37 Sapelo sand
- 38 Scranton sand
- 39 Surrency mucky fine sand
- 44 Tooles-Nutall fine sands, depressional
- 47 Otela-Alpin fine sands, 0-5% slopes
- 48 Otela, limestone substratum-Ortega sands, 0-5% slopes
- 50 Udorthents and Quartzipsamments, excavated
- 51 Goldhead fine sand
- 52 Meggett and Croatan soils, frequently flooded
- 53 Quartzipsamments, dredged
- 54 Maurepas muck, frequently flooded
- 99 Water
- 100 Waters of the Gulf of Mexico