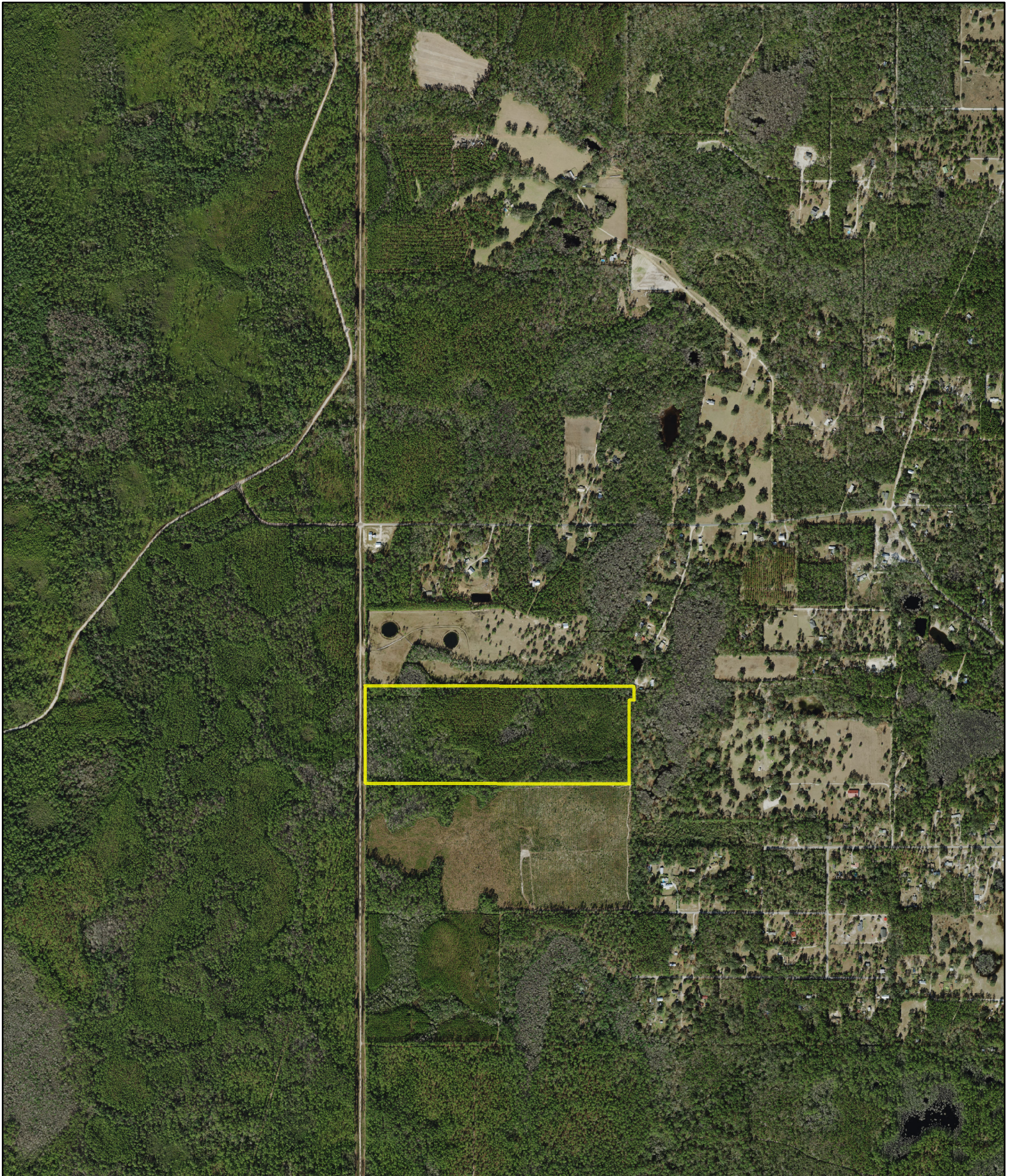


# Thomas Tract, Wakulla County, FL



D.E. Billingsley  
Licensed Real Estate Broker  
Alabama/Florida/Georgia/Montana

Phone: (850) 510-3309  
Email: [DE@debillingsley.com](mailto:DE@debillingsley.com)  
[www.debillingsley.com](http://www.debillingsley.com)