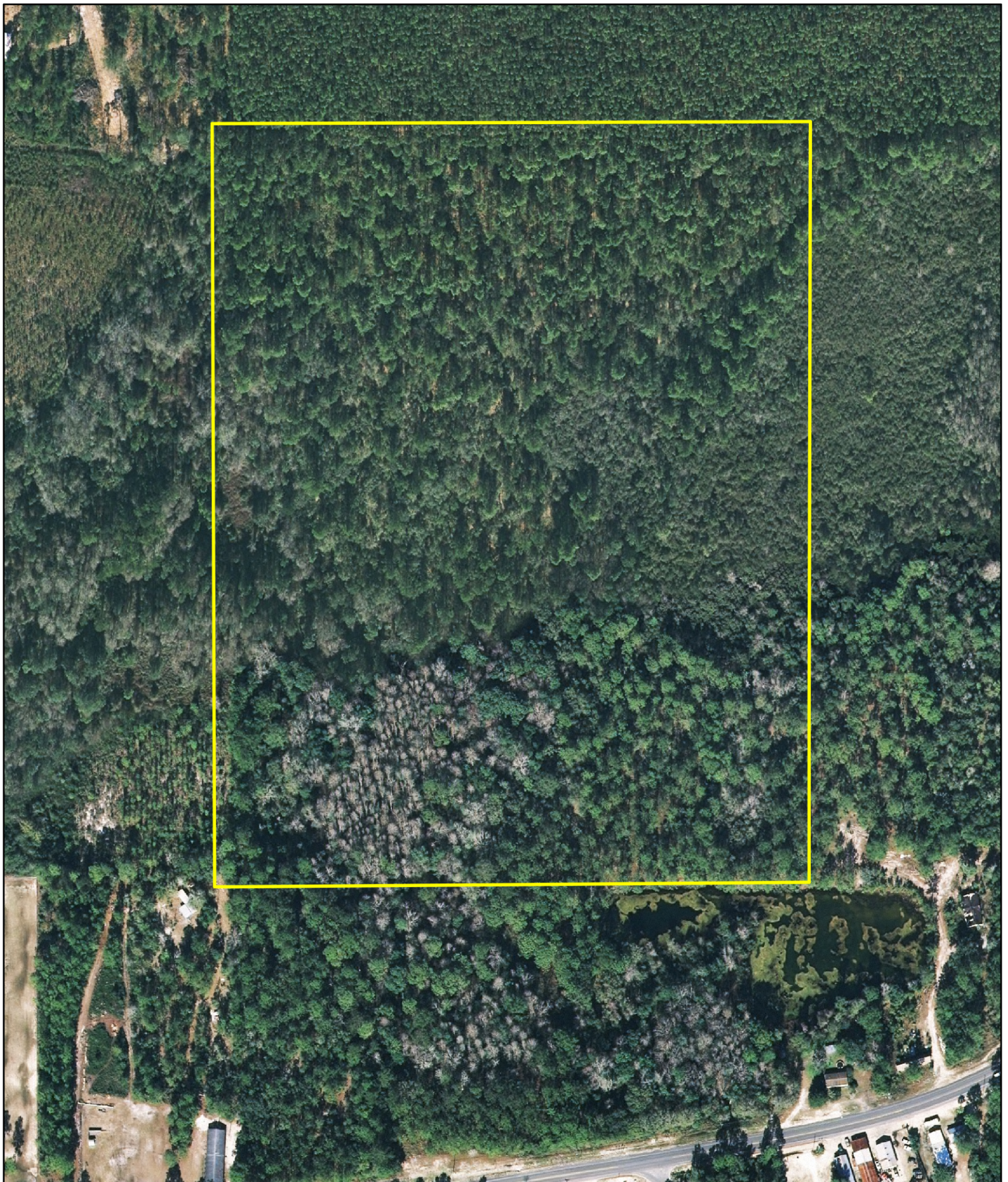


# Sopchoppy Hill - Wakulla County, FL



D.E. Billingsley  
[Licensed Real Estate Broker](#)  
Alabama/Florida/Georgia/Montana

Phone: (850) 510-3309  
Email: [DE@debillingsley.com](mailto:DE@debillingsley.com)  
[www.debillingsley.com](http://www.debillingsley.com)