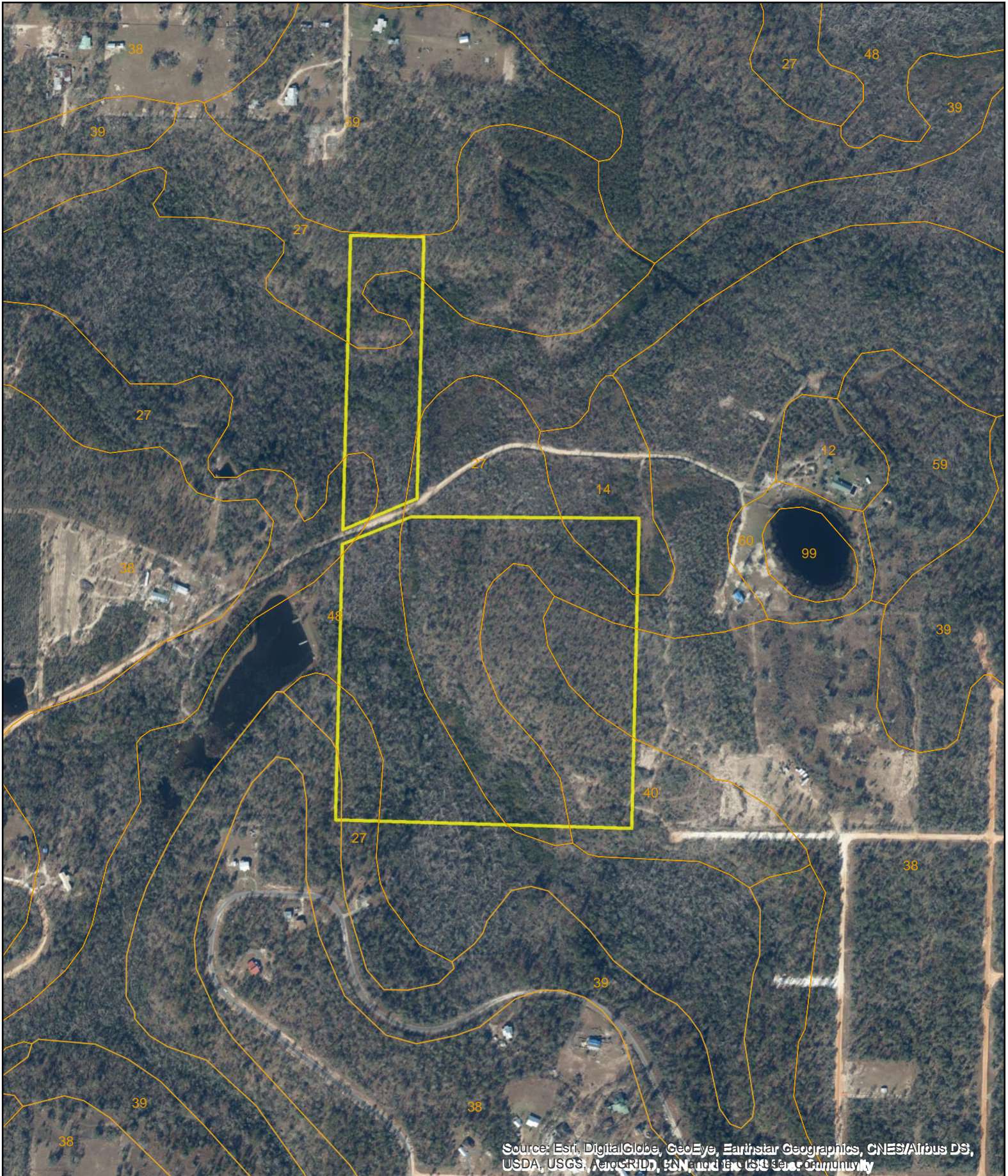


Austin Lane, Jackson County, FL



Source: Esri, DigitalGlobe, GeoEye, Earthstar Geographics, CNES/Airbus DS, USDA, USGS, AeroGRID, IGN, and the GIS User Community

D.E. Billingsley
Licensed Real Estate Broker
Alabama/Florida/Georgia/Montana

Phone: (850) 510-3309
Email: DE@debillingsley.com
www.debillingsley.com

Jackson County

Soil Type

1	Alapaha loamy sand	49	Pansey fine sandy loam
2	Albany sand, 0-5% slopes	50	Pits
3	Apalachee clay	51	Plummer sand
4	Bethera silt	52	Plummer sand, depressional
5	Bibb soils	53	Red Bay fine sandy loam, 0-2% slopes
6	Blanton coarse sand, 0-5% slopes	54	Red Bay fine sandy loam, 2-5% slopes
7	Blanton coarse sand, 5-8% slopes	55	Red Bay fine sandy loam, 5-8% slopes
8	Bonifay sand, 0-5% slopes	56	Rutlege loamy sand
9	Bonifay sand, 5-8% slopes	57	Tifton loamy sand, 2-5% slopes
10	Chipola loamy sand, 0-5% slopes	58	Tifton loamy sand, 5-8% slopes
11	Chipola loamy sand, 5-8% slopes	59	Troup sand, 0-5% slopes
12	Clarendon fine sandy loam	60	Troup sand, 5-8% slopes
13	Compass loamy sand, 0-2% slopes	61	Troup sand, 8-12% slopes
14	Compass loamy sand, 2-5% slopes	62	Urban land
15	Compass loamy sand, 5-8% slopes	63	Wicksburg-Esto complex, 2-5% slopes
16	Dorovan-Pamlico association	64	Yonges-Herod association
17	Dothan loamy sand, 2-5% slopes	99	Water
18	Dothan loamy sand, 5-8% slopes		
19	Dothan loamy sand, 8-12% slopes		
20	Duplin fine sandy loam, 0-2% slopes		
21	Duplin fine sandy loam, 2-5% slopes		
22	Esto loamy sand, 2-5% slopes		
23	Esto loamy sand, 5-8% slopes		
24	Faceville loamy fine sand, 2-5% slopes		
25	Faceville loamy fine sand, 5-8% slopes		
26	Faceville loamy fine sand, 8-12% slopes		
27	Faceville-Esto complex, 5-15% slopes, severely eroded		
28	Foxworth sand, 0-5% slopes		
29	Foxworth sand, 5-8% slopes		
30	Fuquay coarse sand, 0-5% slopes		
31	Fuquay coarse sand, 5-8% slopes		
32	Grady fine sand loam		
33	Greenville fine sandy loam, 2-5% slopes		
34	Greenville fine sandy loam, 5-8% slopes		
35	Hornsville fine sandy loam, 0-2% slopes		
36	Hornsville fine sandy loam, 2-5% slopes		
37	Iuka loam		
38	Lakeland sand, 0-5% slopes		
39	Lakeland sand, 5-8% slopes		
40	Lakeland sand, 8-12% slopes		
41	Lakeland sand, 12-30% slopes		
42	Leefield loamy sand		
43	Oktibbeha variant-Rock outcrop complex, 2-5% slopes		
44	Oktibbeha variant-Rock outcrop complex, 5-12% slopes		
45	Orangeburg loamy sand, 0-2% slopes		
46	Orangeburg loamy sand, 2-5% slopes		
47	Orangeburg loamy sand, 5-8% slopes		
48	Pamlico-Pantego-Rutlege association		