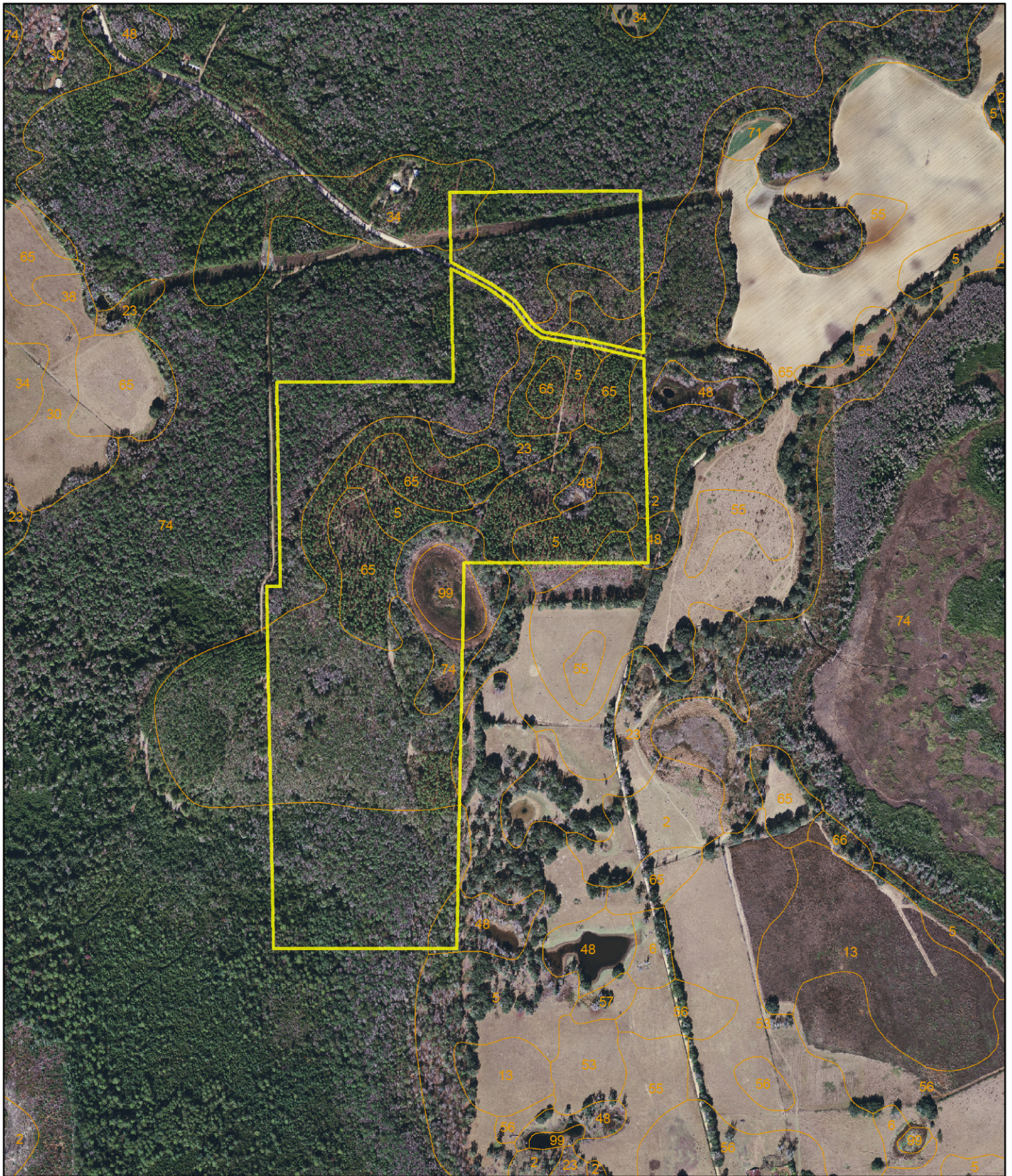


# Gifford Tract - Madison County, FL



D.E. Billingsley  
Licensed Real Estate Broker  
Alabama/Florida/Georgia/Montana

Phone: (850) 510-3309  
Email: [DE@debillingsley.com](mailto:DE@debillingsley.com)  
[www.debillingsley.com](http://www.debillingsley.com)

# Madison County

## Soil Type

- 2 Albany sand, 0-5% slopes
- 3 Alpin sand
- 5 Blanton sand, 0-5% slopes
- 6 Blanton sand, 5-8% slopes
- 10 Lakeland sand, 0-5% slopes
- 11 Lakeland sand, 5-8% slopes
- 13 Lucy sand, 2-5% slopes
- 14 Lucy sand, 5-8% slopes
- 15 Mascotte sand
- 16 Orangeburg loamy sand, 2-5% slopes
- 17 Orangeburg loamy sand, 5-8% slopes
- 18 Orangeburg loamy sand, 8-12% slopes
- 21 Cantey fine sandy loam
- 22 Pelham sand
- 23 Plummer sand
- 26 Troup sand, 0-5% slopes
- 27 Troup sand, 5-8% slopes
- 28 Chipley fine sand, 0-5% slopes
- 30 Ocilla sand, 0-5% slopes
- 34 Sapelo sand
- 38 Goldsboro loamy sand, 2-5% slopes
- 48 Plummer and Surrency soils,  
depressional
- 53 Bonifay fine sand, 0-5% slopes
- 55 Esto fine sandy loam, 2-5% slopes
- 56 Nankin loamy sand, 5-8% slopes
- 57 Nankin sandy loam, 8-12% slopes
- 58 Fuquay sand, 2-5% slopes
- 61 Alaga loamy sand, 0-5% slopes
- 62 Alaga loamy sand, 5-8% slopes
- 63 Alaga loamy sand, 8-12% slopes
- 64 Alaga loamy sand, moderately wet,  
0-5% slopes
- 65 Lovett sand, 0-5% slopes
- 66 Lovett sand, 5-8% slopes
- 67 Udorthents, loamy
- 71 Faceville loamy fine sand, 2-5% slopes
- 72 Faceville loamy fine sand, 5-8% slopes
- 74 Dorovan and Pamlico soils,  
depressional
- 77 Surrency, Plummer, and Cantey soils,  
frequently flooded
- 78 Alpin fine sand, occasionally flooded
- 79 Eunola fine sand, occasionally flooded
- 80 Kenansville loamy fine sand, 0-5%  
slopes
- 99 Water