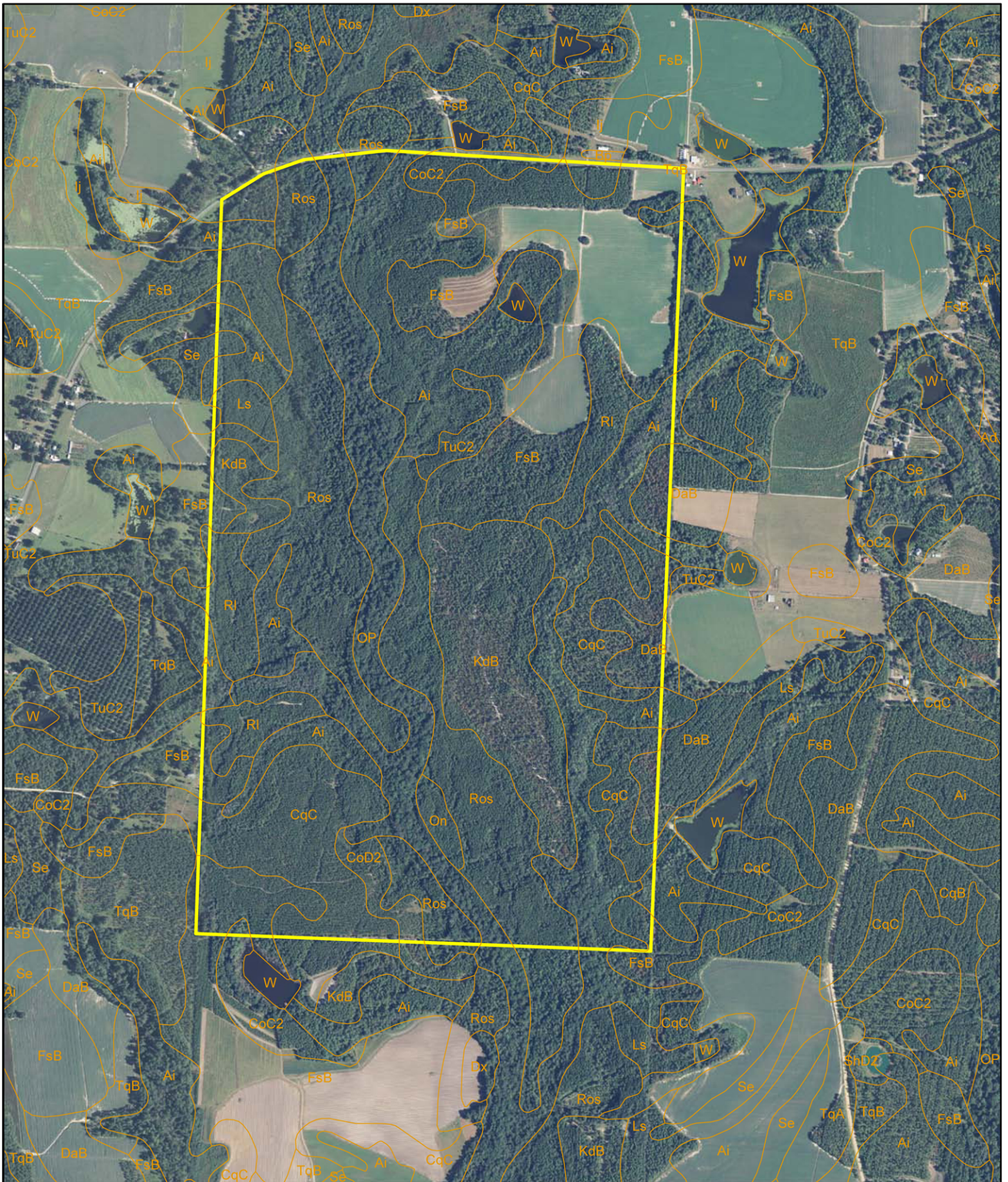


Turkey Hill - Colquitt County, GA



D.E. Billingsley
Licensed Real Estate Broker
Alabama/Florida/Georgia/Montana

Phone: (850) 510-3309
Email: DE@debillingsley.com
www.debillingsley.com

Colquitt County

Soil Type

Ad	Albany sand
Ai	Alapaha soils
Bm	Bayboro mucky loam
Bp	Borrow pits
CoC2	Carnegie sandy loam, 5-8% slopes, eroded
CoD2	Carnegie sandy loam, 8-12% slopes, eroded
CqB	Cowarts loamy sand, 2-5% slopes
CqC	Cowarts loamy sand, 5-8% slopes
Cy	Chipleys soils, frequently flooded
DaA	Dothan loamy sand, 0-2% slopes
DaB	Dothan loamy sand, 2-5% slopes
Dx	Dunbar fine sandy loam, frequently flooded
EfC	Esto complex, 2-8% slopes
FsB	Fuquay loamy sand, 1-4% slopes
Grd	Grady soils
Ij	Irvington loamy sand
KdB	Kershaw sand, 0-5% slopes
Ls	Leefield loamy sand
Mn	Mascotte sand
Oa	Olustee sand
OeB	Orangeburg loamy sand, 3-6% slopes
Oh	Ocilla loamy sand
On	Ocilla loamy fine sand, frequently flooded
OP	Osier and Pelham soils
RI	Robertsdale loamy sand
Ros	Rains fine sandy loam
Se	Stilson loamy sand
ShD2	Sunsweet sand loam, 5-12% slopes, eroded
Suc	Stilson-Urban land complex
TnC	Tifton-Urban land complex, 2-8% slopes
TqA	Tifton loamy sand, 0-2% slopes
TqB	Tifton loamy sand, 2-5% slopes
TuB2	Tifton sandy loam, 2-5% slopes, eroded
TuC2	Tifton sandy loam, 5-8% slopes, eroded
W	Water