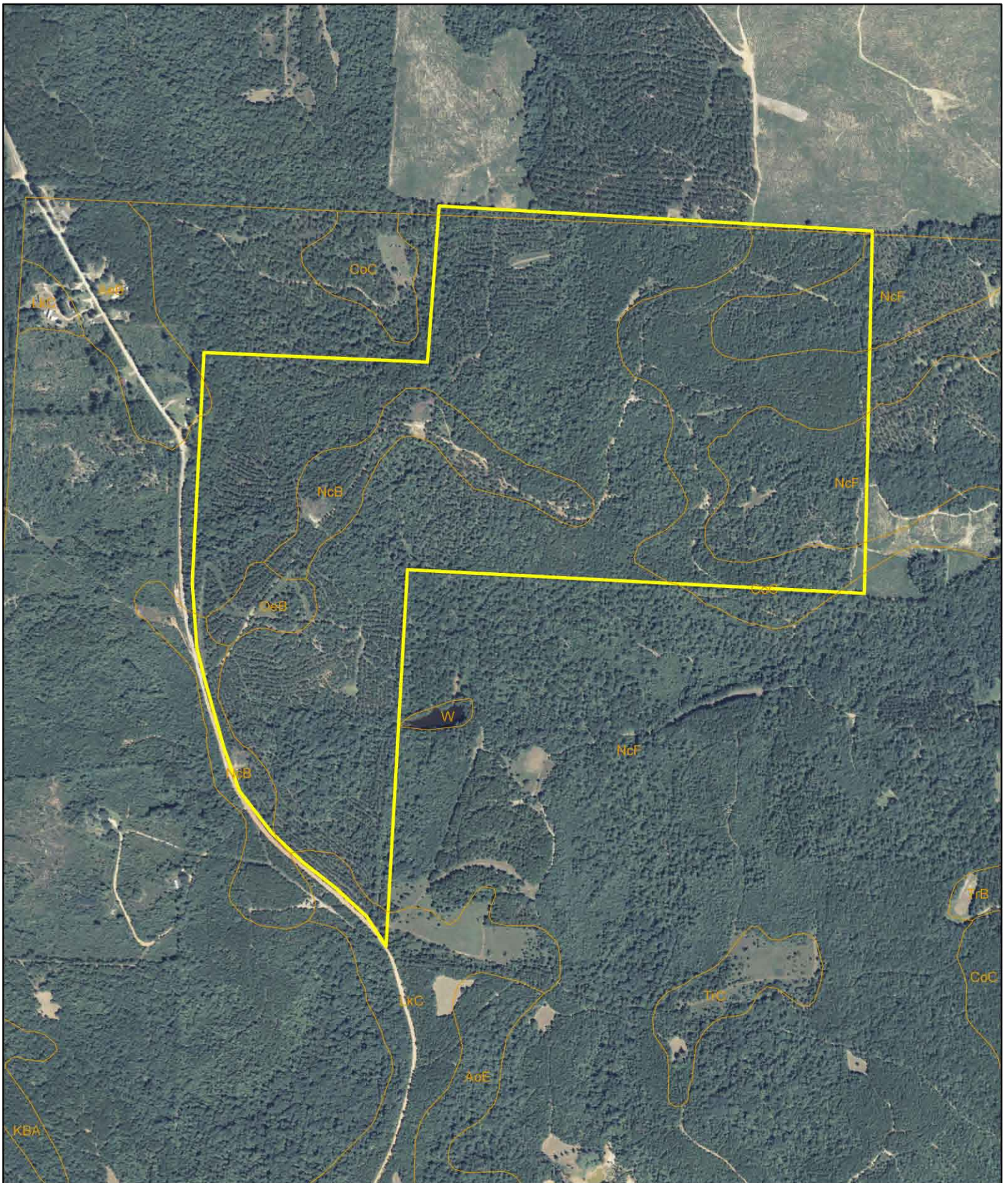


# High Hill Farm- Randolph County, GA



D.E. Billingsley  
Licensed Real Estate Broker  
Alabama/Florida/Georgia/Montana

Phone: (850) 510-3309  
Email: [DE@debillingsley.com](mailto:DE@debillingsley.com)  
[www.debillingsley.com](http://www.debillingsley.com)



# Randolph County

## Soil Type

AeB	Ailey loamy sand, 2-5% slopes	OeD2	Orangeburg sandy loam, 8-15% slopes, eroded
AeC	Ailey loamy sand, 5-8% slopes	Pt	Pits
AoE	Ailey-Cowarts complex, 8-25% slopes	ReA	Red Bay loamy sand, 0-2% slopes
BeB	Benevolence loamy sand, 0-5% slopes	ReB	Red Bay loamy sand, 2-5% slopes
BoB	Bonneau loamy sand, 0-5% slopes	ReC2	Red Bay sandy loam, 5-8% slopes, eroded
CaB2	Carnegie sandy loam, 2-5% slopes, eroded	ReD2	Red Bay sandy loam, 8-15% slopes, eroded
CkC2	Carnegie-Nankin complex, 5-8% slopes, eroded	TrB	Troup loamy sand, 0-5% slopes
CkD2	Carnegie-Nankin complex, 8-15% slopes, eroded	TrC	Troup loamy sand, 5-8% slopes
CnA	Clarendon sandy loam, 0-2% slopes	TrD	Troup loamy sand, 8-15% slopes
CoB	Cowarts loamy sand, 2-5% slopes	W	Water
CoC	Cowarts loamy sand, 5-8% slopes		
FeA	Faceville sandy loam, 0-2% slopes		
FeB	Faceville sandy loam, 2-5% slopes		
FeC	Faceville sandy loam, 5-8% slopes		
GoA	Goldsboro loamy sand, 0-2% slopes		
GrA	Grady clay loam, ponded		
GsA	Greenville sandy clay loam, 0-2% slopes		
GsB	Greenville sandy clay loam, 2-5% slopes		
GsC	Greenville sandy clay loam, 5-8% slopes		
GsD2	Greenville clay loam, 8-15% slopes, eroded		
HnC	Henderson gravelly sandy loam, 2-8% slopes		
HnD	Henderson gravelly sandy loam, 8-15% slopes		
KBA	Kinston and Bibb soils, 0-1% slopes, frequently flooded		
LkC	Lakeland sand, 0-8% slopes		
LkD	Lakeland sand, 8-15% slopes		
LmB	Lucy loamy sand, 0-5% slopes		
LmC	Lucy loamy sand, 5-8% slopes		
LmD	Lucy loamy sand, 8-15% slopes		
MaA	Marlboro sandy loam, 0-2% slopes		
MaB	Marlboro sandy loam, 2-5% slopes		
NcB	Nankin-Cowarts complex, 2-5% slopes		
NcD	Nankin-Cowarts complex, 5-15% slopes		
NcF	Nankin-Cowarts complex, 15-35% slopes		
NoA	Norfolk loamy sand, 0-2% slopes		
NoB	Norfolk loamy sand, 2-5% slopes		
OeA	Orangeburg loamy sand, 0-2% slopes		
OeB	Orangeburg loamy sand, 2-5% slopes		
OeC2	Orangeburg sandy loam, 5-8% slopes, eroded		